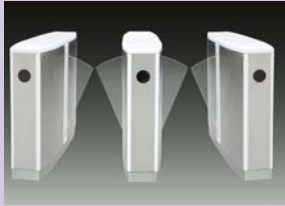


Mass Transport Ticketing Gate

Ticketing Flapstile



Half Height Flapstile



Design for People with Reduced Mobility

As Solution for the Access of People with reduced mobility, we can provide an additional version with wider opening

Technology specification:

- Framework: Stainless Steel 304 Grade (Optional 314 Grade)
- Specification: 1470* 300* 940(mm)
- Weight: 140(kg)
- Arm length: 250(mm)
- Interface: standard port-RS485
- Power voltage: AC220 (10%more or less) V,50HZ
- Drive voltage: 24V
- Transit speed: 30-40persons per minute
- Working Environment: Indoor/Outdoor (with overhead cover)
- Temperature: 10 below degree to 50 degree
- Humidity: < 90%

Extensible function:

- Double directions controlled, Single direction controlled with LED direction indicator
- Optional: Longer Box Size : 600*300*940(mm)

Optional:

- Material of arms (optional)
- RFID Remote Control



Triport Turnstile

The turnstile provides a basic tripod to control access smoothly and effectively by basic operation, and also prevent illegal in and out. The machine is well in design, rustproof, durable and can resist external destroy.

- Single/double walkway control one or both direction
- A valid lock action can allow one passage at one time
- Normally open the machine will unlock when a valid signal is received
- It will lock automatically if passage through turnstile is not completed within pre-set time, the set time can be adjusted via parameter change
- Emergency configuration: The tripod will drop automatically by power off or by hand to provide a clear walkway for escape in the event of an emergency
- Traffic-light: Red Cross symbol will illuminate to indicate the unit is not available for pass, and a green arrow indicate the direction of allowable passing

Technical Specification:

- Framework: 304 /316 Grade Stainless Steel
- Shell' size:420*280*990mm (Standard)
- Arms length: 510mm
- Finish: Brushed surface (default)/ polishing / Hot-galvanized
- Operation voltage: AC220V (50Hz)/AC (110-240) (60Hz); Main-board voltage: DC 24V
- Interface: one standard port-RS485
- Control panel with count and LED digital function
- Control panel with alarm and sounds indication functions (optional)
- Transit speed: 20-30 persons per minute
- Work environment: Indoor/outdoor
- Temperature: -20 ! degree to 60 !
- Emergency and Traffic-light function

Standard Accessories and Optional Extras

- Alternative Materials, Finishes and Custom Design
- Top material can be supplied to suit customer requirements
- Finish and color optional
- Access control system integration (Please refer to our Access control system of C-L2000 and C-T2000)
- Integration of customer supplied readers inside
- Card reader Pedestals
- Ticket system integration
- Status Lights
- LED display Status Lights flush mounted within the turnstile top, top face. The Green badge symbol is continuously illuminated indicating passage is available. Upon authorization a Green arrow will illuminate in the direction of passage authorization while in the opposite direction a Red Cross symbol will illuminate to indicate the unit is not available for use or is already in use.

Push Button Control

- Simple remote Push Button by wireless console
- Single push-button casework or top mounted
- Remote console to specific requirements

Usage Counters

- Electro-mechanical, re-settable or non-re-settable counters outside

Mechanical Operation

- Non-electrical unit allowing free movement in one direction - reverse direction locked



Design for People with Reduced Mobility



Design for People with Reduced Mobility

Full Height Flapstile

Passage Way Security Gate



SinKiosk AsiaPac Inc. Singapore

Blk. 153 Bukit Batok St.11 # 03-296, Singapore 650153, Tel: S'pore 65-64694594, Fax: 65-62343917 Email: sales@sinkiosk.com
 FACTORY: Rm 22B, Shenhua Business Building Subsidiary Building, No: 2018 Jabin Road, Luohu District, Shenzhen, New China